



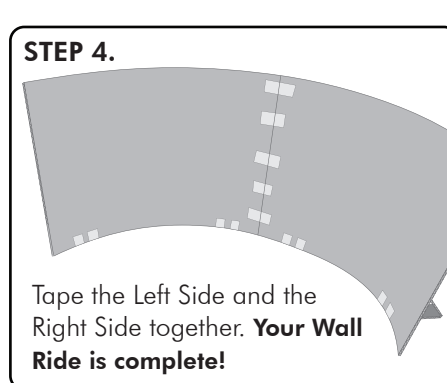
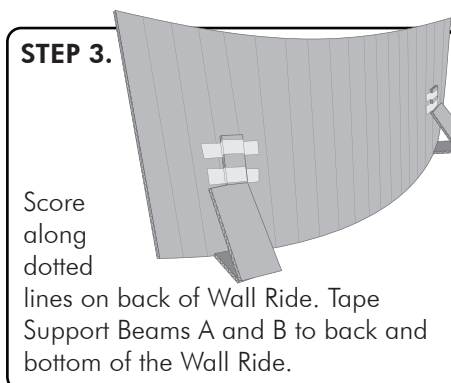
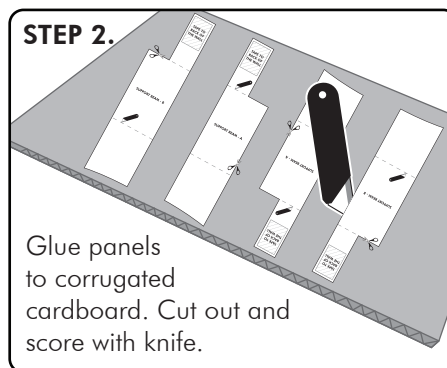
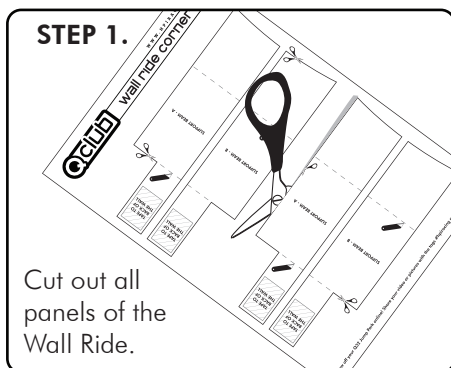
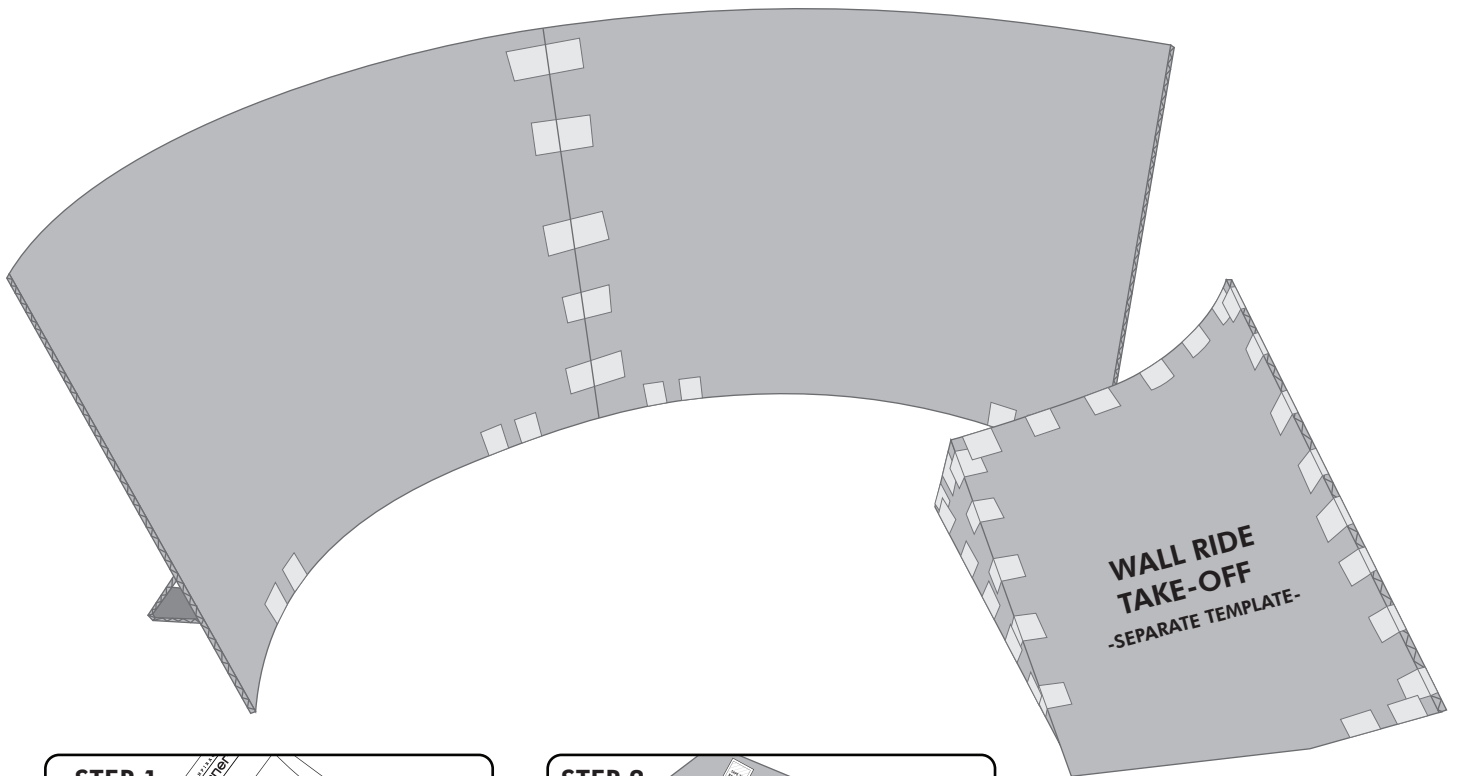
# wall ride corner



Make your own Q32 stunt park with these exclusive Qclub Wall Ride Corner instructions! Mix these with the Wall Ride Take-off Ramp, MTX Launch Ramp or the Quarter Pipe Ramp to make a huge, fun adventure area for your Q32!

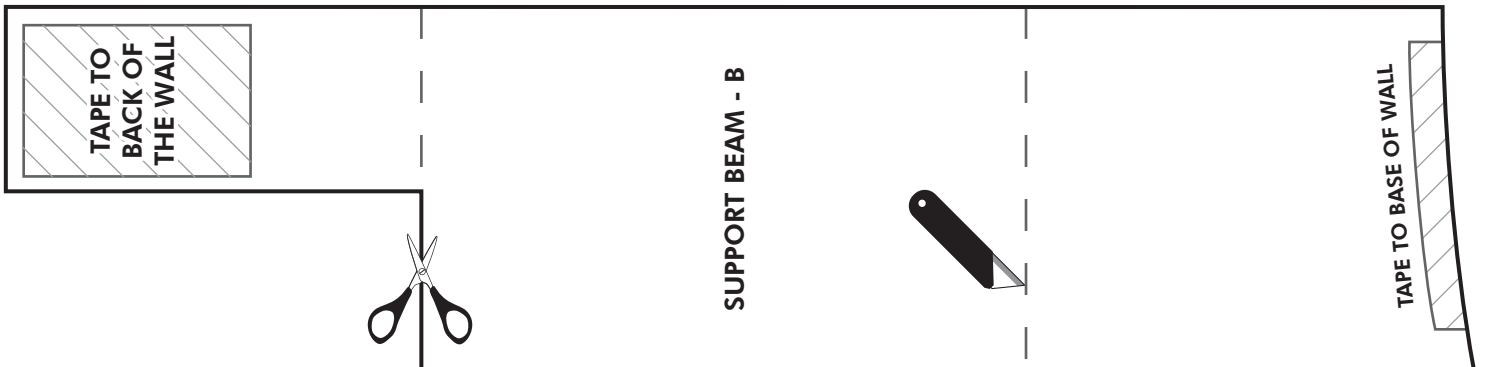
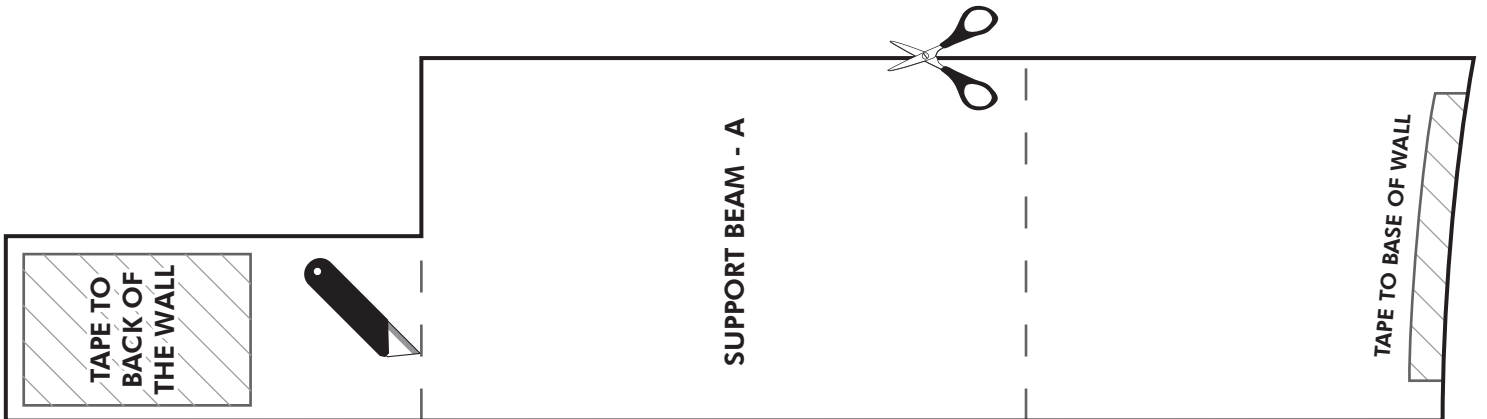
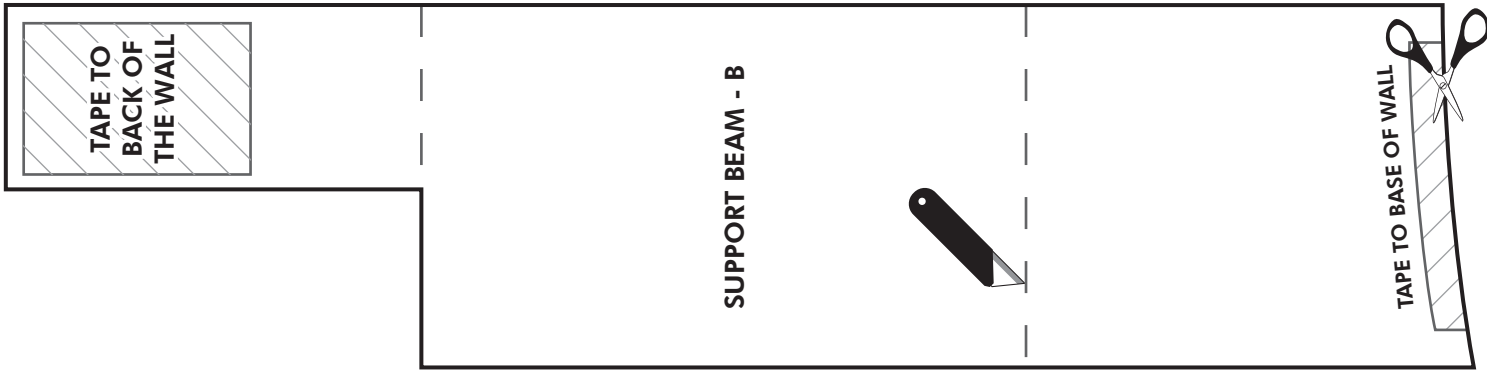
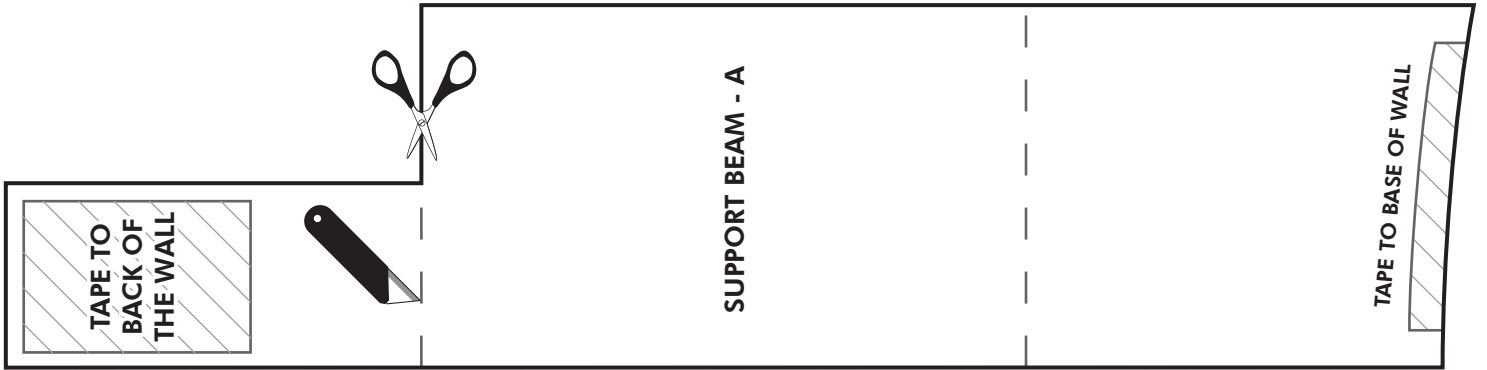
**Please Note!** We highly recommend that Q32 owners under the age of 14 get help from an older friend or parent when following these instructions. Please be extra careful when using sharp objects and always use a cutting mat or board.

**TOOLS REQUIRED :** Scissors, Craft Knife, Metal Ruler, Cutting Board, Tape, Glue Stick.





# wall ride corner



# Qclub wall ride corner

GLUE TO A4 SHEET OF CARD BOARD  
AND SCORE ALONG DASHED LINES



TAPE SUPPORT BEAM  
- B BASE HERE

THE WALL - LEFT SIDE



TAPE SUPPORT BEAM  
- A BASE HERE

# Qclub wall ride corner

GLUE TO A4 SHEET OF CARD BOARD  
AND SCORE ALONG DASHED LINES



TAPE SUPPORT BEAM  
- B BASE HERE



THE WALL - RIGHT SIDE

TAPE SUPPORT BEAM  
- A BASE HERE