



Series SLIM 10mm

10mm cutout for internal mounting



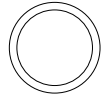
10mm cutout for external mounting flange size



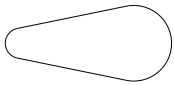
10mm cap side profile



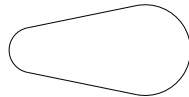
surface/body cutout



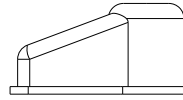
minimum cap-size profile extension internal mount



cap-size for external mount profile extension

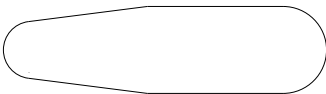


10mm cap with profile extension side view



Series PRO 11mm

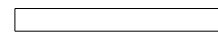
11mm cap outline



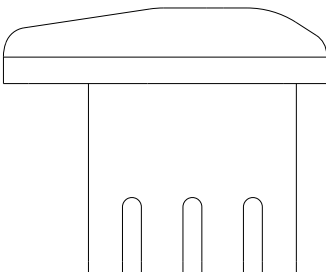
11mm cap with cutout mounting



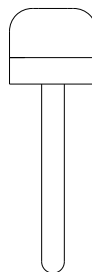
minimum surface/body cutout 4W version



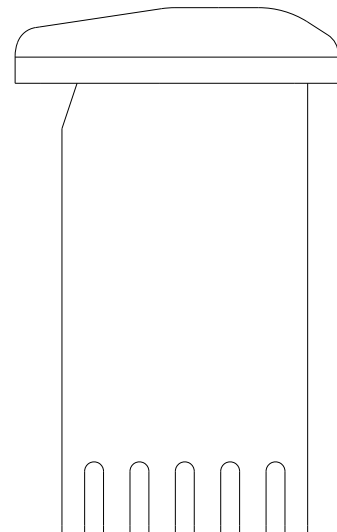
side view 4W version



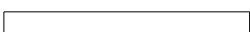
front view 4W version



side view 8W version



minimum surface/body cutout 8W version



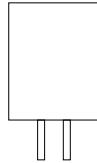


Series RND 12mm

light 12mm
top view



light 12mm
side view



Series RND 10/24mm

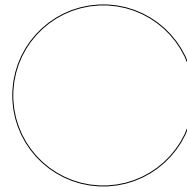
emitter cutout
internal mounting



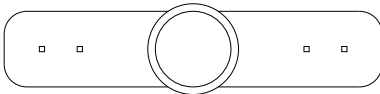
10mm cap for
internal mounting



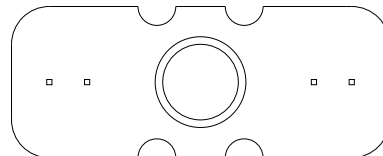
24mm cap



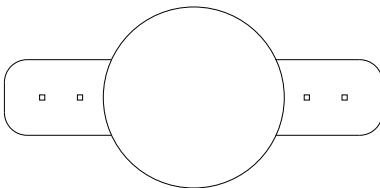
drill dimensions
small plate



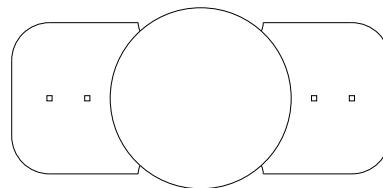
drill dimensions
big plate



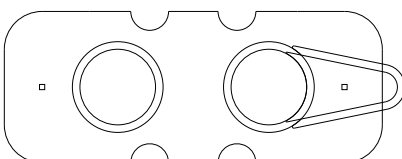
drill dimensions
small plate



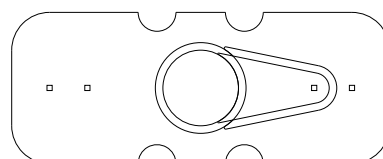
drill dimension
big plate



DUAL 10mm
with mounting plate

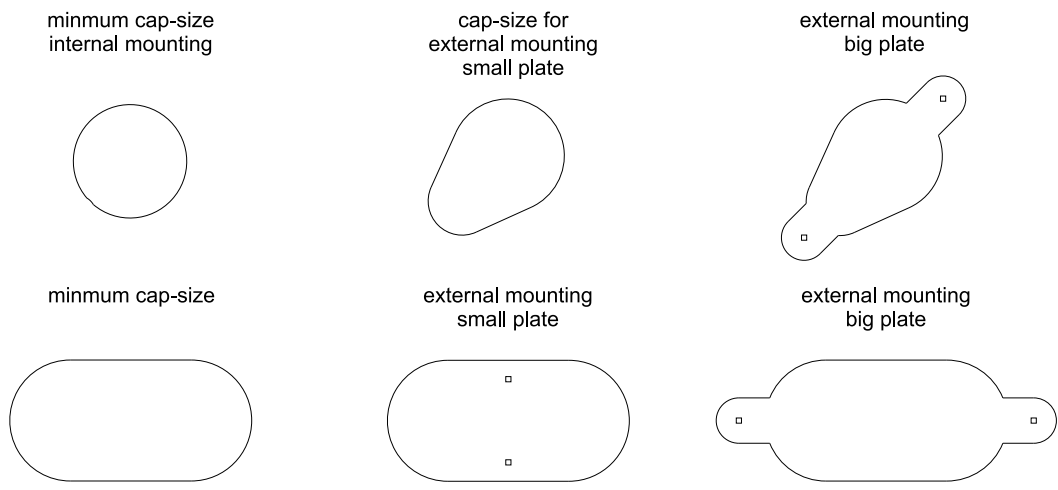


dimension with big plate
profile extension

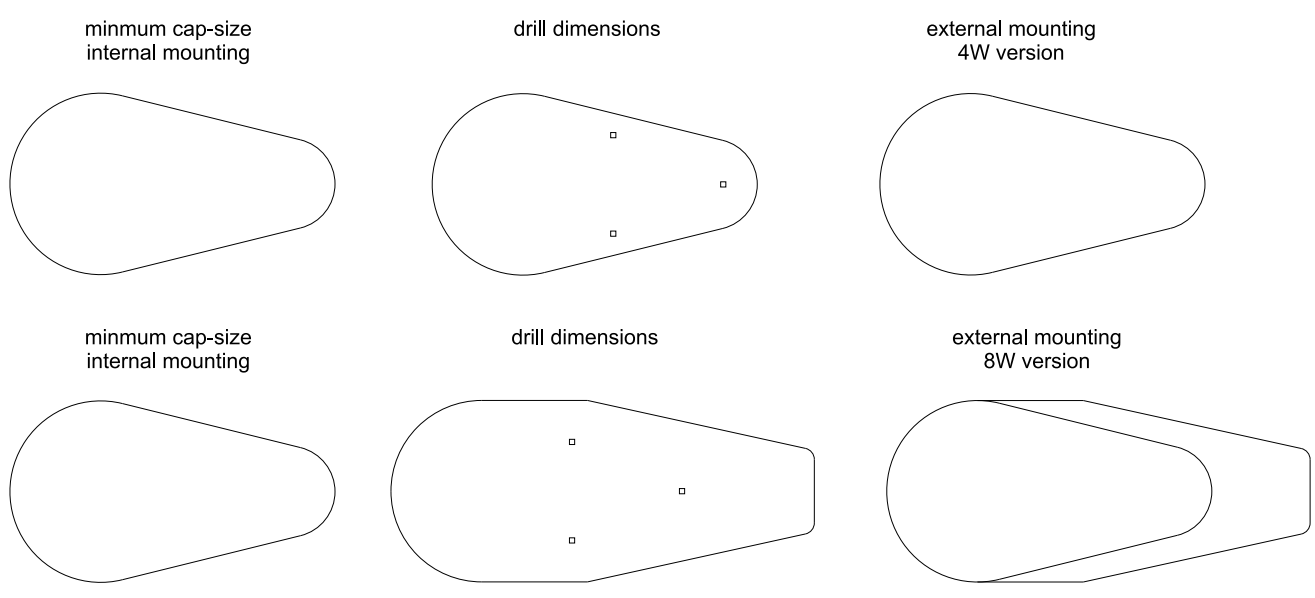




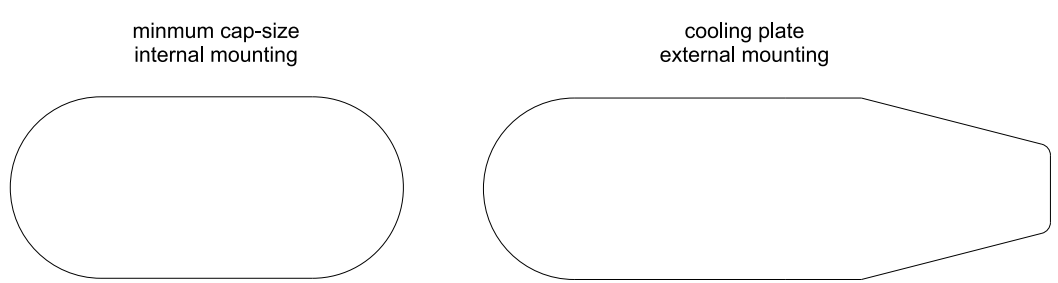
Series CUBE/DUALCUBE 15mm



Series PRO/DUAL 24mm



Series DUAL 24mm





Series SPOT 12mm

surface/body cutout



outside dimensions



side view short version

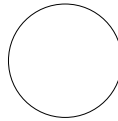


Series SPOT 15mm

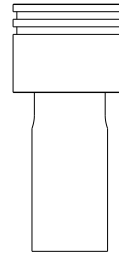
surface/body cutout



outside dimensions



side view short version

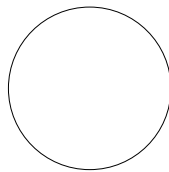


Series SPOT 22mm

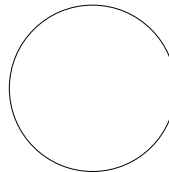
minimum cutout
4W heatsink



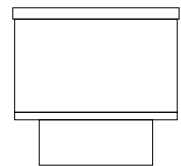
minimum cutout
reflector base



surface cutout
„drop through”



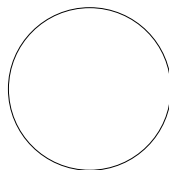
side view
4W version



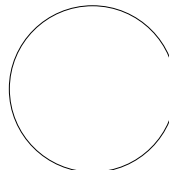
minimum cutout
8W heatsink



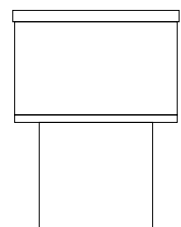
minimum cutout
reflector base



surface cutout
„drop through”



side view
8W version



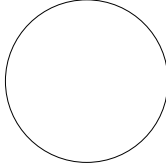


Series SPOT 22mm

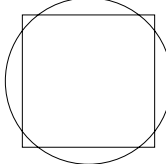
minimum cutout
8x2/12W heatsink



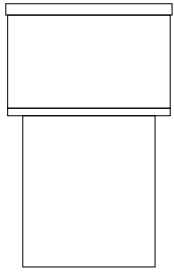
minimum cutout
reflector base



surface cutout
„drop through”



side view
8x2/12W version

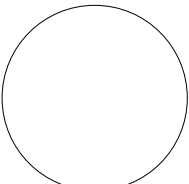


Series SPOT 25mm

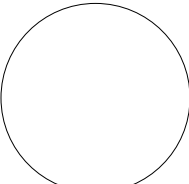
minimum cutout
4W heatsink



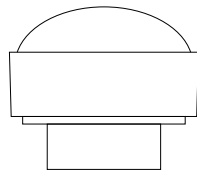
minimum cutout
reflector base



surface cutout
„drop through”



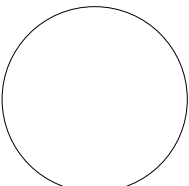
side view
4W version



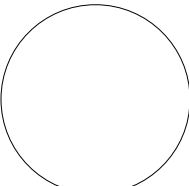
minimum cutout
8W heatsink



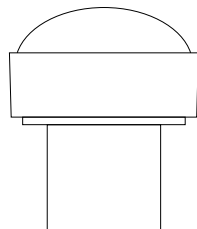
minimum cutout
reflector base



surface cutout
„drop through”

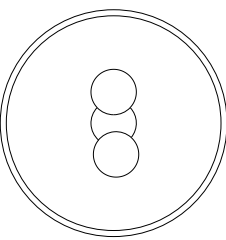


side view
8W version

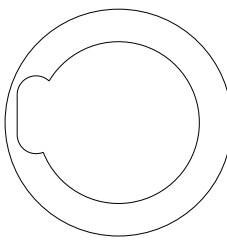


Series SPOT 30mm

outside shape
FRONT



outside shape
BACK



side view
040x2



side view
080x2

